

Here we present the three services that CEH offers through NanoCommons transnational access that include (i) Ecotoxicological Laboratory Workflows, (ii) Data processing & analysis (EcoToxicology), and (iii) Predictive Eco-NanoToxicology.

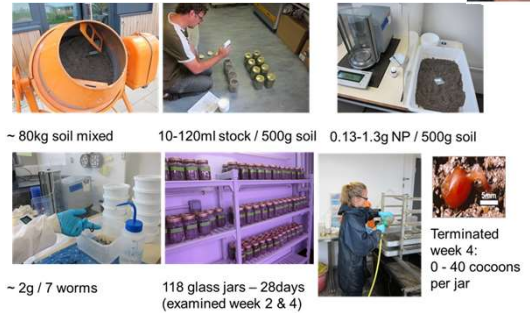


NanoCommons
 Nano-Knowledge Community



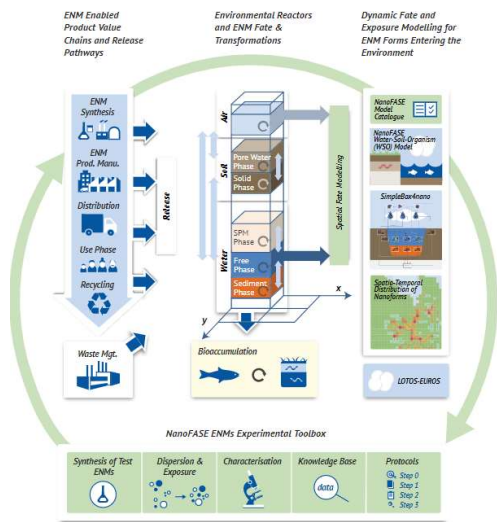
Laboratory Workflows (EcoToxicology)

Users: organisations wishing to establish nano-ecotox labs or large-scale data generation experiments



Delivering: new/improved nano-ecotox facilities; robust & valuable datasets on nano-ecotoxicology

Predictive Eco-NanoToxicology



Users: Existing large data-set holders (inc. projects)

Delivering: Supported access for NanoFASE environmental fate model catalogue & framework Predictions of environmental fate of nanomaterials

Processing & Analysis (EcoToxicology)



Users: Projects/Researchers with large datasets or plans to generate them

Delivering: Data processing to ensure FAIR principal: Findable, Accessible, Interoperable, Re-usable

Templates and data basing facilities specifically designed for nano-ecotoxicological studies.